

# VALKYRIE™

## Thoracic Fixation System

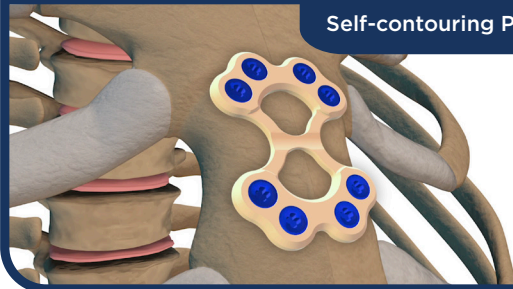
Valkyrie features radiolucent PEEK plates, which allow patient specific contouring (without the need for plate bending tools). The system's bioactive screws generate faster bone growth and their double lead thread pitch make insertion easier and quicker. Developed as a single use system to save shelf space, Valkyrie offers big advantages in small packaging.

- SMART - Bioactive Screws
- FAST - Self-contouring PEEK Plates
- SIMPLE - Single Use System

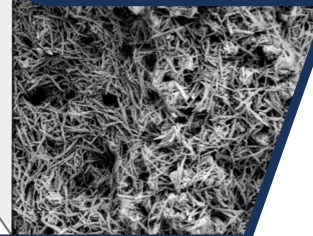
THE CLEAR CHOICE



Self-contouring PEEK Plates



Bioactive Screws - HAnano



Streamlined Packaging

